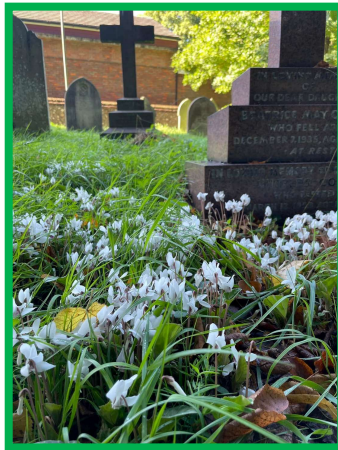


# St Mary's News

October 2022



## *Includes ....*

Moving into a New Era – the Revd Tony rindl

Report on the PCC – Marcus Jones

Workaid Tools request – Brian & Jackie Mee

*... and much more!*

## Moving into a New Era



As the nation continues to mourn the death of our Queen and adjusts to having not only a new King but also a new Prime Minister, there is understandably a great deal of uncertainty. This has not helped with the war in

Ukraine, a fragile economy with high inflation and predicted hardship for many. This also comes on the back of Brexit which has not been as smooth as some had hoped for and many had feared.

One of the British values that we can be most proud of is the coming together in times of adversity. It was pleasing to see at the recent Civic Service on the eve of Her Majesty's funeral that a wide cross section of Watford's community was represented. We are also well served by many charities and community groups that offer support to those who are struggling and what we might call on the margins of our society. It is important that as a church we play our part in reaching out to those who are in need in our community.

On our website we state that 'as a community we believe we are called to follow Jesus' example to love and care for one another and to reach out and be a beacon of hope to others.' Whilst we may not be immune to the same level of uncertainty as others, we do have our faith and belief and trust in Jesus. The Prophet Isaiah writes, 'When you pass through the waters, I will be with you; and when you pass through the rivers, they will not sweep over you. When you walk through the fire, you will not be burned; the flames will not set you ablaze.' (Isaiah 43:2) I am also reminded of that great old hymn 'Will your anchor hold', whose chorus goes 'We have an anchor that keeps the soul, Steadfast and sure while the billows roll, Fastened to the Rock which cannot move, Grounded firm and deep in the Saviour's love'.



As we continue to reflect on the Queen's long reign and her lifetime of service, we recognise her sense of duty and integrity, and what a significant part faith has played in her life. Whilst the royal family has known turbulent times the Queen seems to have remained dignified and strong throughout. Acceding to the throne at a young age, and only a matter of a few years after the Second World War, her long reign has seen many changes and as a nation we have gone through many challenging times, yet her leadership and example has encouraged and inspired many. It has won her the respect and admiration of many across the world. The Queen's speech was not simply part of our Christmas Day traditions: her message as she reflected back over the events of the past year and looked forward to the next, encouraged and inspired millions of listeners. She invariably made sure her message reminded us of the true meaning of Christmas and the hope it brings.

As we now move into a new era it is important that we pray for our new King, our new Prime Minister and all in authority, remembering St. Paul's words to Timothy, 'I urge, then, first of all, that petitions, prayers, intercession and thanksgiving be made for all people – for kings and all those in authority, that we may live peaceful and quiet lives in all godliness and holiness. This is good, and pleases God our Saviour, who wants all people to be saved and to come to a knowledge of the truth. (1 Timothy 2:1-4)

### *The Revd Tony Rindl*

*Tony's sermon given at the Civic Service can be found on page 8*



## Report of Parochial Church Council

The following report summarises some of the matters considered at the PCC's meeting of 12 September.

*Finance:* St Mary's overall financial situation remains precarious, and we are still expected to breach our reserves threshold around the end of the year. However, the congregation has responded to the appeal so far with some £2,000 of donations. The Standing Committee is continuing to look at ways to reduce expenditure and expects to make firm recommendations to the PCC in October.

Two legacies have been received. One will be used, in part, to repair the damp wall in the office. Careful consideration will be given to the possibility of using the other to employ a part time children's/youth worker.

The Vicar made a statement about problems which had arisen following the cancellation of the 2020 Israel trip as a result of the pandemic and gave answers to questions and concerns raised by PCC members.

*Buildings:* New Hope have applied to Watford Council's Neighbourhood Grants Scheme for funding for the installation of a memorial stone in the churchyard. In making decisions on funding, the Grants Scheme takes note of the support expressed by local interests. New Hope is therefore asking for support from members of St Mary's. This is an on-line process and church members are encouraged to express their support through the following link: <https://watfordneighbourhoodgrant.commonplace.is/proposals/new-hope-memorial-garden-at-st-marys-church-watford/step1>. A new AV system for the church was approved with costs to be met from restricted monies remaining in the Development Fund and a grant from the Churchlands Trust.

*Pre-School:* Anthony Gray has joined the Pre-School committee and Adriana Komarova has taken over as the new manager. A process is underway to appoint a new team. Two staff have already been appointed and this is expected to rise to a total of five allowing Pre-School to increase the number of children offered places. Eileen Roby, an Early Years Leader, will also support Pre-School after half term.

*Communion:* The common cup will be offered again at Wednesday Communion but communicants who have hygiene concerns e.g. about Covid will be advised that they need not feel obliged to take it.

*Vicar's Report:* This was longer due to the Vicar's sick absence at the July PCC meeting. He reported that:

- he had attended the wedding of Ash and Edith David with other St Mary's members in June, a most joyful occasion.
- also in June, he had attended the ordination of Ash, Phil Macaulay and Cath da Costa and felt that the number of ordinands coming forward through St Mary's was something to celebrate.
- more charitable groups are coming into the church and there was a real 'buzz' about the place on Tuesdays. He had recently had a conversation with Luther Blissett, the former Watford and England footballer now Deputy Lieutenant of Hertfordshire, who wanted to explore ways of working more closely with St Mary's.
- he had spoken with the Royal British Legion about how the Remembrance service might be improved.
- weekly concerts are to be re-introduced on Thursdays (previously Tuesdays).
- the joint Heritage Day/Bike & Hike on 10 September had been a success and he thanked Liz Allan for organising it and

those who had taken part by welcoming visitors, providing refreshments and engaging visitors in period conversations.

- it had been a great joy to him to conduct the wedding of Sam and Anita.

If you wish to send correspondence to the PCC please send it to the PCC Secretary, Marcus Jones (email: [ttekcos@aol.com](mailto:ttekcos@aol.com)).

*Marcus Jones  
PCC Secretary*

---

## Red Hearts



**Watford Schools Trust** is asking for **knitted red hearts** to give to children in St John's School when they do their next Explore, week beginning Monday 7<sup>th</sup> November. There are a few copies of the pattern on the table at the back of Church or please ask in the Office or find a copy via the WST website -

<http://www.watfordschoolstrust.org/>

## Searching the internet using a tree friendly search engine – ECOSIA



**Ecosia** <https://www.ecosia.org/> is a search engine which plants trees when you use it to search the internet.

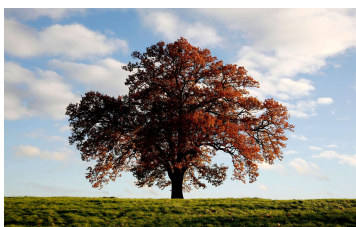
Planting trees is one way of helping to reduce carbon dioxide in the atmosphere. It takes about 10 or more years for a newly planted tree to begin to really make a difference, absorbing Carbon Dioxide by photosynthesis.

Carbon Dioxide is a green-house gas, which helps to trap heat from the sun's rays as they enter the atmosphere on earth. This causes global warming, which has many bad consequences for life on earth.

We have seen recently how floods, wild-fires, droughts and severe weather has caused so many disasters around the world. Continual heating of the environment causes polar ice caps to melt, glaciers to melt and sea levels to rise.

**Try Ecosia! It is a good green search engine!**

*Brian & Jackie Mee*



# Sermon on the Death of Her Majesty Queen Elizabeth II

In all probability one would have to be over seventy-five years old to remember the Queen's coronation. Over the years I have heard that generation regale stories of huddling around a television watching the young Princess being crowned Queen of the United Kingdom and other Commonwealth realms. For many it was their first encounter with the television. It is a far cry from the modern world with its laptops and iPads and smart phones. Her reign truly did last a lifetime and oversaw dramatic changes and events in world history.

I am mindful of Her Majesty's words when as a young Princess she addressed the nation on her 21<sup>st</sup> birthday. 'I declare before you all that my whole life, whether it be long or short, shall be devoted to your service and the service of our great imperial family to which we all belong.'

For over seventy years she has been our Queen making her the longest reigning monarch in British history. For over seventy years she has been under the scrutiny of the public eye. And for over seventy years she has demonstrated great fortitude, dignity and integrity and that great sense of duty.

She has gained the respect and admiration of not only countless millions of her subjects here in the United Kingdom and across the Commonwealth but across the entire world. She was not just our Queen she was The Queen

It is a measure of how much she was held in regard that so many heads of state from all around the world will gather in Westminster Abbey for her funeral. Like every funeral it will contain three important elements: first, and foremost, it is an opportunity to reflect on her remarkable life, but it is also space where grief and this great sense of loss can be acknowledged, and it is also a place where comfort and hope maybe sought, and that will



undoubtedly reflect the Queen's own faith and the trust she placed in the teachings and promises of Jesus Christ.

Her personal faith clearly shaped her understanding of what it meant to be Queen seeing it as an act of service dedicating her entire life in fulfilling this role and her sense of calling.

Despite being present at countless ceremonies and some of the most historic events of the past seventy years, and regularly entertaining heads of state and many of the most powerful men and women of the modern age, despite all the royal pomp and circumstance, the Queen never seemed to lose the human touch, and that is to her credit. She could wear her crown and she could also be seen wearing a headscarf walking her corgis or riding her horses. She could hold an audience at the State Opening of Parliament and she could stoop down to receive a small posy of flowers from a young child.

I am afraid I never met the Queen, but my mother had the good fortune to meet her on two or three occasions. On one occasion as patron of the historical association, of which my mother was a member, there was the customary requirement for the Queen to cut a special cake made for the occasion. Unfortunately, the normal procedure of providing a soft segment to the cake had not been observed causing the Queen to struggle in cutting the cake. The Queen's reaction was to simply giggle, and no doubt quickly hand the ceremonial knife to one of her aids to deal with it. A rather ordinary account of being in the presence of such an extraordinary person.

I am well aware that many of you present or watching the livestream of this service will have met the Queen and have your own stories to share. Please do share those stories with your children and grandchildren.

Born in 1926 the young Princess was not expected to accede the throne, that is until her Uncle abdicated leaving her Father to be King George VI and reign from 1936 until his death in 1952. I think

his leadership and that of the Queen Mother must have had a great influence on the young Princess. Her parents were greatly admired for the stance they took during the war, sharing in the sufferings and hardships of the common people with Buckingham Palace being bombed during the blitz whilst the Royal Family were in residence. The young Princess played her part in the war effort as a mechanic in the Auxiliary Service.

Elizabeth was only twenty-five when she became Queen. A tall order for a grieving daughter but as we know she has throughout her long reign done such a magnificent job. She never wavered from that sense of duty and to think one of her last public duties was to receive our new Prime Minister just two days before her death.

I am mindful of what the Bishop of St. Albans said in his tribute in the House of Lords where that picture of the Queen receiving the new Prime Minister was one of fragility and frailty in a world where we are being presented endlessly that the only style of leadership is that which is bold and aggressive and so on. She was showing us that actually there are other sorts of leadership which can come from humanity, which can come from fragility. That picture of her leaning on her stick stooped over with a hand stretched out was for Bishop Alan a picture of welcome and warmth. Something that she must have done countless times over the years whether she was welcoming the great and the good or ordinary people like you and me.

She has of course known the support of her beloved husband Prince Philip, the Duke of Edinburgh. A constant companion at her side and she must have missed him terribly and indeed is quoted as saying his death having left a huge void in her life. We can all recall the pictures of her dressed in black sitting alone in St. George's Chapel. It was a dignified occasion that happened in the midst of the pandemic and encapsulated her integrity and again in direct challenge to how we normally see leadership.

Grief, in the Queen's own words, is the price we pay for love. And now many millions mourn her death, and our thoughts and prayers are with the King and all the Royal Family.

We may have lost our beloved Queen, but they have lost their mother, their grandmother, great grandmother who from all accounts was much loved and cherished and displayed in her life such warmth and kindness.

Her death brings much sorrow to all of us. Her reign has been the one constant in a vast ocean of change over the past seventy years.

I don't know about you I always looked forward to the Queen's Speech at Christmas not so much because it was a tradition that we enjoyed but because she inspired and encouraged. She never shied away from sharing her understanding of the true meaning of Christmas and the hope and joy it brings even in challenging times and times of personal loss. There was a credibility about her message which invariably left me deeply moved.

The absence of anyone who has been very much part of our lives leaves us with not only a deep sense of grief and what has been lost but also a sense of bewilderment and not quite knowing what the future holds. I thought as our new King addressed the nation he was able to assure us that his intention is to follow the example set by his Mother who in turn undoubtedly learned much from her Father and Mother.

Her death marks the end of an era. No doubt in time it will be known as the second Elizabethan age, and our Queen's place in history will be seen as being every bit as important as her namesake if not more so. I trust she will be remembered for her faith which not only influenced her life of service but sustained her through difficult times and the hope she often spoke of in her Christmas Speech and elsewhere.

I hope that style of leadership which Bishop Alan identified, not of power and strength, but fragility and frailty, of warmth and

welcome, will inspire us perhaps to uphold the values that can be gained from the teachings of Christ, to follow the golden rule of doing to others as we would have done to ourselves. To love our neighbour. To love God, to embrace values of patience, kindness, generosity, faithfulness, and so much more we saw in Her Majesty.

And so finally as we look for comfort, as we look for hope, I leave you with words from Her Majesty Queen Elizabeth II who addressed the nation in Easter 2020, when we could not celebrate in churches, and where she unapologetically claimed that the message and the truth of Easter has not changed, and she went on to say “The good news of Christ’s resurrection has been passed on from the first Easter by every generation until now. The discovery of the risen Christ on the first Easter Day gave his followers new hope and fresh purpose, and we can all take heart from this.”

*The Revd Tony Rindl  
on the Eve of the Funeral of Her Majesty  
19<sup>th</sup> September 2002*



## Workaid Tools Request

Workaid is a charity based in Chesham, Buckinghamshire empowering young people in Africa (and the UK) to help themselves by developing the skills and knowledge needed to find gainful employment or start their own business.



Workaid does this by refurbishing donated tools to a high standard and shipping them to training centres and self-help organisations. In 2015 Workaid received the Queen's Award for Voluntary Service.

Every year Workaid sends enough tools to help 9000 people learn the skills they need to help themselves out of poverty.

Vicar Tony has offered some space in his garage to store donated tools and he will deliver them to Workaid when a car-load has been donated. Watch this space to know when to donate them. By donating your unwanted items, you will be recycling them for reuse.

*Accepted items include:*

Carpentry and woodworking tools and machinery

Plumbing tools

Tools for motor mechanics

Masonry tools

Electrical equipment

Drills

Welding equipment

All makes of sewing machines

Haberdashery - all things for sewing

Knitting machines

Wool, including needles and patterns

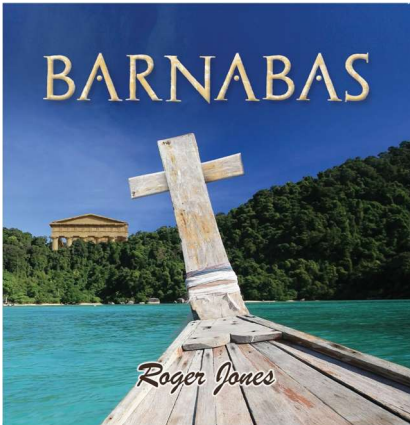
Gardening tools and machinery

PPE in original sealed packaging

Ironmongery (not rusty)

*Brian & Jackie Mee*

## Barnabas – the Musical



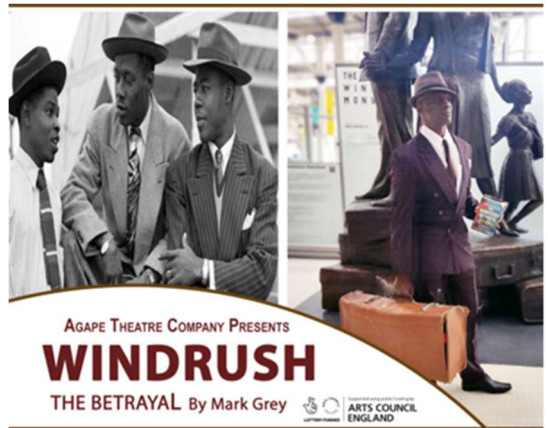
**Barnabas, the Musical** (by Roger Jones) - join Joyful Noise Choir for a day of singing workshops, culminating in a public charity performance, of 'Barnabas' on Saturday 29<sup>th</sup> October from 10:30am to 5:30pm at St Oswald's Church, Croxley Green WD3 3QL - singers need to pre-book as choir places are limited. Audience tickets will be available on the door, as well as

bookable in advance. To book please contact Sarah Moreton for a booking form: email [moretons1964@gmail.com](mailto:moretons1964@gmail.com) or 07929 645179.

---

## Windrush – the Betrayal

**Windrush - The Betrayal** (by Mark Grey) presented by the Agape Theatre Company in The Pump House Theatre from 13<sup>th</sup> to 15<sup>th</sup> October – a true story. An ideal piece for entertainment, education and discussion. Tickets £17.50 (£14.50) from 0344 8000 400 or [www.ticketquarter.co.uk](http://www.ticketquarter.co.uk)



## Services

### The Church is usually open each week

Monday to Friday between 9.30am and 3.00pm  
and on Saturday between 12.00noon and 2.00pm

### Sunday

9.00am Holy Communion (said) in church  
on 1<sup>st</sup>, 3<sup>rd</sup> & 5<sup>th</sup> Sunday only each month;  
10.30am Morning Service in church and via Zoom  
every Sunday;  
5.30pm Encounter in church  
on 4<sup>th</sup> Sunday of month only  
(preceded at 5.00pm with refreshments)

### Wednesday

12.30pm Holy Communion in church

*(for Zoom links please contact Church Office)*

### Thought for the Week

on our website and on Facebook - based on a bible verse or passage,  
it is a short reflection by one of the leadership team  
for you to think about during the week.  
It can be downloaded and listened to whenever and wherever.

Please keep up to date with what is on offer  
via our Facebook page  
or the website [www.stmaryswatford.org](http://www.stmaryswatford.org)

# Who's Who at St Mary's

## Vicar

The Revd Tony Rindl  
01923 225189 / 07792 505480  
[tony.rindl@gmail.com](mailto:tony.rindl@gmail.com)

## Churchwarden

Peter Dean  
07876 154387  
[peter.dean@stmaryswatford.org](mailto:peter.dean@stmaryswatford.org)

## Facilities Manager

[stmarysfacilitiesmanager@gmail.com](mailto:stmarysfacilitiesmanager@gmail.com)

## Church Office

[office@stmaryswatford.org](mailto:office@stmaryswatford.org)  
St Mary's Church, Church Street,  
Watford WD18 0EG  
01923 225189

[www.stmaryswatford.org](http://www.stmaryswatford.org)